

ART300

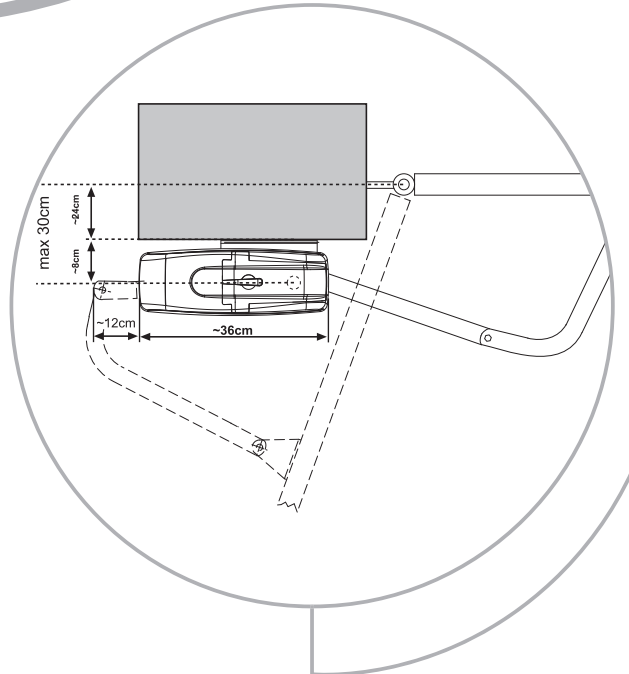
CHAMBERLAIN
LiftMaster
PROFESSIONAL



**Articulated arm
gate operator**



**Symmetrical &
compact design**



the wing gate opener for wide pillars

The special arm is ideal for wide pillars. An automatic stop and built-in limit switch are special features for this operator.

Features:

- Symmetrical and compact design
- Automatic stop
- Built-in limit switch Open/Close
- Manual release in case of power outage
- Mounting brackets for wide pillars included
- Maintenance free
- Rotation distances possible up to 30cm
- Robust construction
- Can be used for folding doors

ART-1

Folding door arm

- For folding doors up to 1.5m each wing
 - Mounted to top of folding door
 - Can be used right and left side
 - Includes door bracket



ART-2

2m gate arm

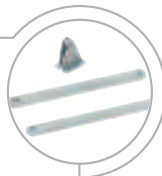
- 2m /150kg
- For gates with low side room
- Light duty



ART-3 3m

3m gate arm

- 3m/250kg
- Includes door bracket & screws
- Heavy duty



ART-4

External release lock for gates

- Robust construction
- For gates without second entrance.
- Releases operator from outside
 - Provides additional safety against power failures



ART-5

Internal release lock for gates

- To open folding door in case of power failure
 - Easy to install
- Provides additional safety against power failure



ART-6

Base plate narrow fit

- Suitable for narrow posts
- Easy to install



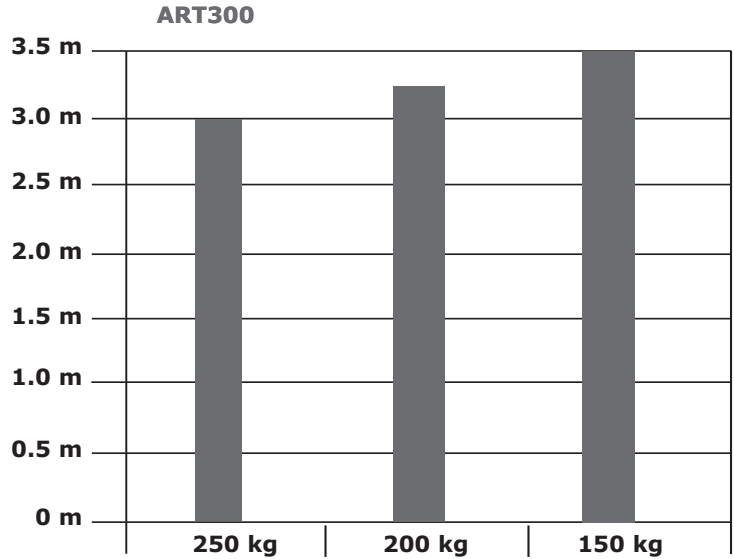
ART-7

Base plate standard

- Suitable for standard posts
- Easy to install



Wing size



Wing weight

Specification chart

		ART300	ART300K
Number of operator		1	2
Voltage in	VAC	230	230
Frequency	Hz	50	50
Power max	W	400	400
Current max	A	1.8	1.8
Thrust (max)	Nm	350	350
Capacitor	micro F	10	10
Thermal overload protection	deg C	140°	140°
Motor speed	RPM	1400	1400
Opening time 90 degree	sec	14	14
Duty cycle	cycles/hr	20	20
Working temperature range	deg C	-20°C/+55°C	-20°C/+55°C
Protection class		I	I
Degree of protection	IP	44	44
Weight	kg	9	9
Drive arms included		no	yes (3m)
Electronic control		no	yes
Remote controls		no	2 X 3ch mini
Frequency	MHz	no	433.92
IR sensor		no	yes
Flashing light		no	yes
Key switch		no	yes
Antenna		no	yes
Approx. gate length	m	3	3
Max gate weight at max. length	kg	250	250

Optional accessories

- **600091** Main Switch
- **600008** IR Stand
- **600084** Emergency Stop
- **600046** Safety Edge
- **600015** Key Switch Stand
- **100263** Extra Infrared Sensors
- **94330E/94333E/94335E** Remote Controls
- **9747E** Wireless Keyless Entry



Install all equipment in compliance with EN60335-2-103

2-year warranty

9A6202

